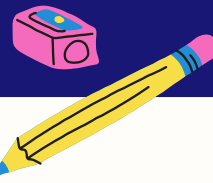


August, 2022



Welcome!

Welcome to Markham Mt. Lebanon Extended Day Program!

We look forward to providing a fun, enriching, and supportive environment for your child. Our program is located in the lunchroom through D-10. We open at 7:00 a.m. and close at 6:30 p.m. Throughout the year, we offer active play as well as creative, social, and emotionally engaging activities.



Contact Us!

Markham Center:
412-563-1245
markham@mledp.org

MLEDP Main Office:
412-343-1661
kids@mledp.org

Staff

This year, we welcome back Miss Parvaneh and Miss Mary!

We also welcome a new center director, Miss Cassidy! She previously worked as a tutor and a director of TGA and is excited to get to know you and your children.

Pick Up/Drop Off

Enter the small parking lot off Beadling Road, the entrance is D-10.

Ring the doorbell upon arrival and a staff member will assist you. Parents will need to walk into the center to sign your child in and out, please remember to bring a form of ID!

Safety

It is extremely important that you inform the staff of any changes in your child's schedule. If your child will not be attending, please leave a note in our parent area, call us at 412-563-1245 or email us at markham@mledp.org. You will be charged a fee (\$25) if you do not inform us that your child will be absent.



The entrance is D-10. All children must be signed in/out each day. Please make sure to have a form of ID during pickup.

Kids can bring breakfast in the morning. We can not store any food items at the center. We provide a daily afternoon snack which is announced in the snack calendar.

Communication

Keep an eye on the the parent table and your email for important information! We will do our best to keep you informed of our activities and news with weekly calendars, newsletters and other postings located in the center. Please become accustomed to looking for these. We would also love a second to talk about your child's activities each day. **Any information that the staff needs to know can be communicated through the parent note sheet, email (markham@mledp.org) or phone (412-563-1245).**

AM Schedule

7:00-7:30: Breakfast/Free Choice

7:30-8:00: Activity or Club

7:45-8:10: Gym Option

8:10-8:15: Clean Up

8:15-8:30: Meeting

8:30: Dismissal to School

PM Schedule

3:30: Check In

3:30-4:15: Snack, Table Activities, & Homework

4:10: Clean Up

4:15-4:40: Meeting and Community Game

4:45-5:15: Clubs

5:15: Switch Clubs (if desired)

5:45: Table Activities

6:00-6:30: Clean Up/Free Choice

Long Days

“Long days” happen when the Mt. Lebanon School District is closed but MLEDP is open (from 7 a.m. to 6:30 p.m.). On those days, we combine with other centers at one of the elementary schools and offer activities for the day. This is an extra day that is not already included in your contracted monthly payment. We will have a sign up sheet available at our parent area. Parents will have one week to sign up for the long day. No sign up will be accepted after the deadline.

Homework

Make sure to complete the form given the first week of school to give permission for the MLEDP and Markham School to work together to assist your child. Our staff are happy to assist children with homework or class projects, however we are not tutors. If your child is struggling with homework, we will ask them to bring it home to work one on one with you.

Dates

August 29th:
First Day of School/
Kindergarten
Long Day

August 30th:
Kindergarten
Long Day

September 1st:
First Day of
Kindergarten

September 5th:
Labor Day -
MLEDP Closed

October 5th:
Yom Kippur:
School
Closed/MLEDP
Long Day

