

Howe  
MLEDP

**Contact Us:**

Howe Center 412-344-6080  
[howe@mledp.org](mailto:howe@mledp.org)  
MLEDP Main Office: 412-343-1661  
[kids@mledp.org](mailto:kids@mledp.org)



Oprah 10 Day Give-Away  
WOW! Thank you all for your generous donations to the Mt. Lebanon United Methodist Church Food Bank! They were so appreciative of our thoughtfulness. The students also helped to write encouraging notes with our donations. It was so sweet to see their hearts shining as bright as their smiles.



**Howe MLEDP Staff**

Mrs. Murdy - Center Director  
AM/PM: Miss Gentile & Miss Karlie

**Reward Day**

**National Science Day & Tech Investigations**  
Our past reward day was a huge success. An extra special "thank you" to our guest speakers: Mr. Fulmer, Mr. Bohenic, and Mrs. Williams! Your expertise and activities with the students were enlightening, engaging, and REWARDING! Our students completed a crystal making experiment with borax and Epsom salts. Additionally, we had 8 electronic devices that students took apart to explore their inner workings. Our new snap circuit set was put to good use, and we had a group of students that recreated the scrum process with LEGO construction.

**Our next Reward Day will be on a MONDAY.**

**NEXT UP:**  
Neil deGrasse Tyson  
Malala Yousafzai  
Tuskegee Airmen  
**\*BATTLE MATCH\* CONNECT  
FOUR TOURNAMENT BTW  
Ghandi-Mandela-Mother  
Theresa - Dalai Lama**

**Who is? Howe KNOWS!**

Our March Madness voting battle ended with a crushing blow to Seabiscuit, who was defeated by Michael Jordan. It was a close match and many students asked that we still try to learn about Seabiscuit if we can. Other surprising upsets included AA Milne over RL Stine and Harriet Tubman over Dolly Parton!



**HAS ANYONE SEEN \_\_\_\_\_ TODAY?**

Oh, they went home sick.

They were just upstairs...

Yea, they had an early release.

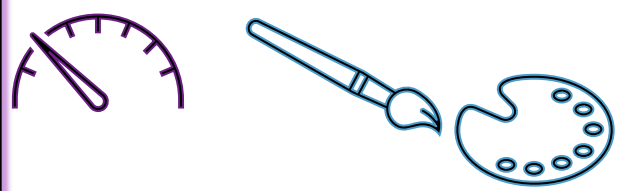
Our heart drops every time we are expecting a student and they don't arrive at dismissal. It is not the school's responsibility to pass along your communications. When there is a change to your child's schedule YOU must inform us. Spring brings many changes to activity schedules. Life will get busy! Please don't leave us out. We are legally bound to call emergency contacts until the child has been located or notify the police. Help relieve the stress of having a missing child. We care for your kids deeply and always want to be sure they are safe.

**EMAIL**  
**HOWE@MLEDP.ORG**  
**OR CALL**  
**412-344-6080**



**Girls on the Run**

On Mondays and Wednesdays female students run around the school, through the basketball courts, and small driveway that leads to the cafeteria. As you are picking up your children on these days, please drive **SLOWLY**. If you are concerned about being late, feel free to call and we can try to prepare your child ahead of your arrival.

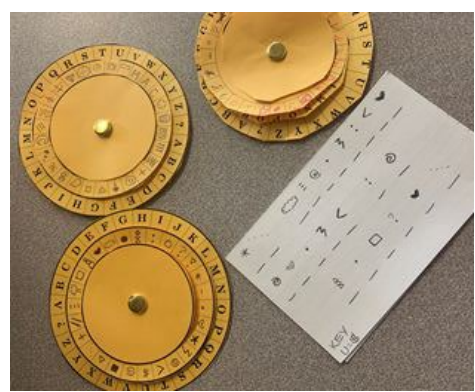


**Inspo Quotes**



**DATES TO REMEMBER**

**Spring Break**  
**MLEDP CLOSED**  
**April 5-10<sup>th</sup>**  
**May 9<sup>th</sup> Early Dismissal**  
**@ 2:15pm**  
**May 16<sup>th</sup> Long Day**



**Navajo Code Talkers:**  
**Ciphers & Secret Messages**